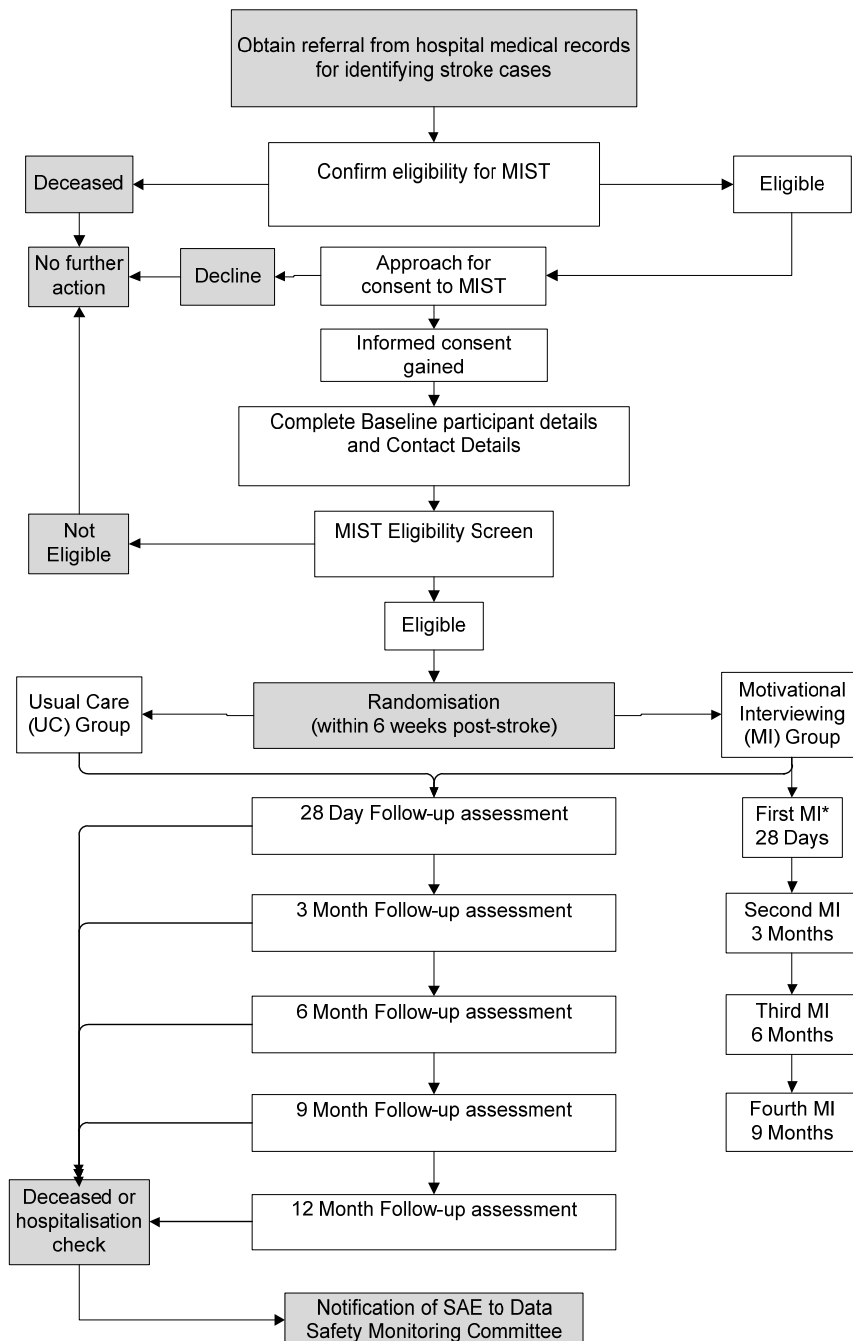


Appendices for MIST paper

Figure 1. Flowchart of Motivational Interviewing in Stroke (MIST) Study Procedures



Note: all time frames are in months post-stroke

*MI: Motivational Interviewing

Table 1. Eligibility Screening Criteria

Criteria	Eligibility requirement for inclusion
Diagnosis	1 st ever stroke, not Subarachnoid Haemorrhage
Date of Stroke	Randomisation within 6 weeks post-stroke
Cognitive impairment	Mini-Mental State Examination (59) \geq 23
Mental Health	No current mental health diagnosis and/or receiving current psychological treatment that would affect/contradict MI
Involvement in other studies?	No involvement in another study that could affect compliance with treatment or result in significant participant burden
Access to telephone	Has telephone access
Availability	Available to answer further questions in up to 12 months post randomisation
English language	Able to converse fluently in English

Table 2. Outcome measures and timing of follow-up

	Baseline*	3 months	6 months	9 months	12 months
From Medical Notes:					
Demographics (e.g., age, ethnicity)	✓				
Type of stroke, stroke severity	✓				
Pre-stroke lifestyle risk factors (e.g., smoking, physical activity)	✓				
Medical/cardiovascular history	✓				
Blood lipid profile	✓				✓
Blood pressure	✓		✓		✓
Telephone Interview					
Short Form-36 (SF-36)	✓	✓	✓	✓	✓
Barthel Index (BI)	✓				✓

Hospital Anxiety Depression Scale (HADs)	✓	✓	✓	✓	✓
Costs (direct healthcare expenditures)	✓		✓		✓
Self-reported adherence and barriers to prescribed medications	✓	✓	✓	✓	✓
Modification of lifestyle risk factors	✓	✓	✓	✓	✓

*Baseline assessments are carried out at 28 days post stroke